

1982 MONTE CARLO



HANK KOLODZIEJ

Chevrolet



On cover, Monte Carlo Sport Coupe shown in Redwood.

Monte Carlo Sport Coupe shown in Dark Blue.

1982 MONTE CARLO. WITH STANDARDS AS DEMANDING AS YOUR OWN.

The 1982 Monte Carlo shares your demand for quality. You'll see it in this beauty's trim size and low, aerodynamic profile. In gently arched lines along fenders and doors. With its poised air and classic stance, Monte Carlo will draw many approving looks — from others as well as you.

And the perfectionist in you will value Monte Carlo's admirable inner resources. A smooth-performing diesel engine is newly available.

Rust-resisting materials or coatings in critical areas are lavished on it. Inner fenders, front and rear, further protect inside surfaces from stones and slush. An on-board computer constantly monitors and adjusts the performance of the lively 3.8 Liter V6 standard engine.

And Monte Carlo is generous with comfort. A soothing, relaxing atmosphere results from the interplay of luxury interior appointments,

new full foam cushioned bench seat with a center, fold-down armrest, tasteful upholstery, and ample room for knees, heads and shoulders.

Examine this personal car from Chevrolet and see if it doesn't satisfy your demanding tastes as well as your high standards. The 1982 Monte Carlo. It's a matter of personal pride.

IMPORTANT: A WORD ABOUT THIS CATALOG. We have tried to make this catalog as comprehensive and factual as possible and we hope you find

it helpful. However, since the time of printing, some of the information you will find here may have been updated. Also some of the equipment shown or described throughout this catalog is available at extra cost. Your dealer has details and, before ordering, you should ask him to bring you up to date. The right is reserved to make changes at any time, without notice, in prices, colors, materials, equipment, specifications and models. Check with your Chevrolet dealer for complete information.



ANOTHER POINT IN MONTE CARLO'S FAVOR: NEW DIESEL POWER.

Chalk up another one for Monte Carlo. Its newly available diesel power for 1982 says as clearly as anything what this car is all about. Never satisfied with the status quo. Ever looking for new ways to improve your driving pleasure. And what a pleasure this modern-day powerplant can be.

With an ultra-high compression ratio of 22.5 to 1, Monte Carlo's diesel spontaneously ignites a precise amount of injected fuel, creating full power with less fuel than a gasoline engine.

What's more, there are no spark plugs or distributor to replace, no carburetor to adjust. So there are fewer parts to service than with a gasoline engine.

Consider everything this new diesel power has going for it and you'll find here's still another reason for considering the new Monte Carlo.

At left, Monte Carlo instrument panel.



Monte Carlo Sport Coupe shown in Silver Gray.



Monte Carlo new standard cloth bench seat with fold-down center armrest.

YOU'RE IN YOUR ELEMENT INSIDE MONTE CARLO.

Behind the wheel of the new Monte Carlo is where attention to detail becomes most apparent.

With rich, simulated wood-grain accents and functional design, there's a timeless look to Monte Carlo's instrument panel. Controls are easy to reach. Instrumentation is easy to read.












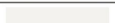
Road noise is muffled by a thickly padded acoustical ceiling and one-piece cut-pile carpeting. And you'll appreciate the added view that comes with the new standard right-hand

outside mirror to match the mirror located on the left.

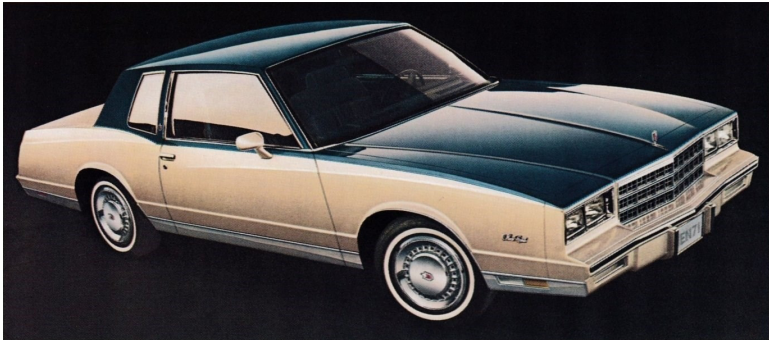
Inside the trunk, a lightweight, compact spare tire contributes to the generous 16.8 cubic feet of space waiting for vacation luggage or everyday toting. You'll also find an easy-to-use jack that lifts the car from the side rather than the bumper.

The 1982 Monte Carlo is your kind of car, brimming with bright ideas and quality touches to make driving a most satisfying experience.

Monte Carlo Custom interior with plush cloth seats, fold-down center armrest and Custom door and quarter trim panels.

EXTERIOR COLORS		INTERIOR COLORS				
		Dark Blue	Camel	Silver Gray	Jade	Redwood
	Beige	•	•			•
	Blue, Dark (Metallic)	•	•	•		
	Blue, Light (Metallic)	•				
	Brown, Light (Metallic)		•			
	Charcoal (Metallic)			•	•	
	Gray, Silver	•		•		•
	Jade, Light (Metallic)				•	
	Jade, Dark (Metallic)		•		•	
	Redwood, Light (Metallic)					•
	Redwood (Metallic)		•			•
	Silver (Metallic)	•		•	•	•
	White	•	•	•	•	•
INTERIORS		Dark Blue	Camel	Silver Gray	Jade	Redwood
Standard split bench seat	Cloth (Std.)	•	•			•
	Vinyl (Opt.)	•	•	•		•
Optional 55/45 seat	Cloth	•	•			•
	Vinyl	•	•	•		•
Optional Custom interior with bench seat	Cloth	•	•		•	•

Monte Carlo Sport Coupe shown in Custom Two-Tone Beige/Dark Blue.



OPTIONAL CUSTOM TWO-TONE COLORS	
White Silver Gray	Int. Color: Silver Gray
Light Blue* Dark Blue*	Int. Color: Dark Blue
Dark Jade* Light Jade*	Int. Color: Jade
Beige Dark Blue*	Int. Color: Dark Blue
Beige Redwood*	Int. Color: Redwood
Light Redwood* Redwood*	Int. Color: Redwood

*Metallic.
Landau-style vinyl roof colors available: Silver Gray, Dark Blue, Light Jade, Beige, Camel, Dark Redwood and White.

MONTE CARLO OPTIONS

See to it that two unique personalities — yours and Monte Carlo's — merge beautifully by choosing from our extensive selection of carefully selected options. Look them over. You'll quickly recognize how well they're geared to indulging your special tastes and needs, how they can add to the special pleasure of owning the 1982 Monte Carlo.

A. REMOVABLE GLASS ROOF PANELS. Enjoy the sun and fresh air of a convertible with these removable roof panels of tinted glass. Just unlatch, lift off and store in trunk.

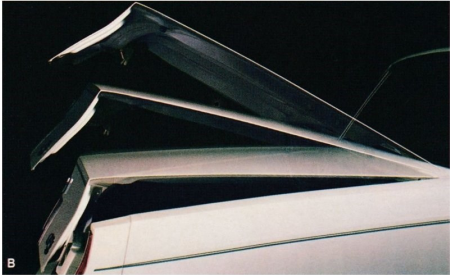
B. POWER TRUNK OPENER. No more fumbling with a key in bad weather. Touch a button inside the glove box and the trunk lid is unlatched.

C. COMFORTILT STEERING WHEEL. Adjusts to six different angles for comfortable driving and to simplify getting in and out.

D. LANDAU-STYLE ROOF. Gives your Monte Carlo an even more elegant look with the rear portion of roof covered with padded, richly grained vinyl.

E-G. WHEEL COVERS AND WHEELS. Three ways to add a distinctive finishing touch to your Monte Carlo. **E.** Wire wheel covers. **F.** Rally wheels. **G.** Aluminum wheels.

H-I. Controls for air conditioning and radio conveniently located in one compact unit. **H. AIR CONDITIONING.** Easily adjusted to the cooling level you find comfortable. **I. SOUND SYSTEMS.** Enjoy good reception with a quality-built GM-Delco sound system: AM radio, AM/FM radio, AM/FM stereo radio, AM/FM stereo radio with 8-track stereo tape, AM/FM stereo

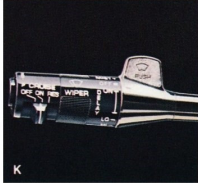
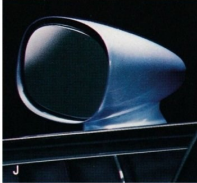
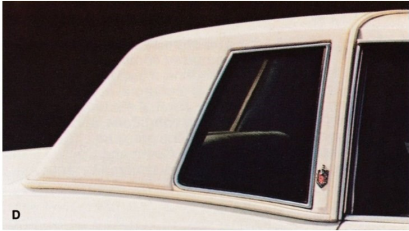
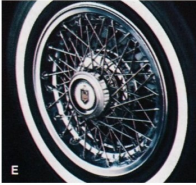


radio with stereo cassette tape. (Fixed-length, fender-mounted antenna included with any optional radio equipment. All radios include dual front speakers; all stereos include dual rear speakers.)

J. TWIN REMOTE SPORT MIRRORS. Sleekly styled mirrors for driver's and passenger's sides can be adjusted from inside car.

K. AUTOMATIC SPEED CONTROL. Maintains a preset speed without touching accelerator. Resume Speed feature lets driver slow up, then accelerate again to preset speed without resetting.

- OTHER MONTE CARLO OPTIONS**
- ☐ Intermittent windshield wiper system
 - ☐ Quartz electric clock
 - ☐ Electric rear window defogger
 - ☐ Power windows
 - ☐ Power door lock system
 - ☐ Halogen hi-beam headlamps
 - ☐ Gage package with trip odometer
 - ☐ Cornering lamps
 - ☐ Auxiliary lighting
 - ☐ Tinted glass
 - ☐ 55/45 front seat
 - ☐ Six-way power front seat, driver's side only (requires 55/45 front seat)
 - ☐ Sport mirrors, left-hand remote, right-hand manual
 - ☐ Illuminated visor mirror, right-hand
 - ☐ Custom Two-Tone paint
 - ☐ Custom interior



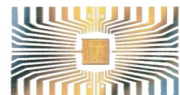
- ☐ Dual rear speakers
- ☐ Power antenna
- ☐ Body pin stripping
- ☐ Heavy-duty battery
- ☐ Heavy-duty cooling
- ☐ Heavy-duty front and rear suspension
- ☐ F41 Sport Suspension (requires P205/70R-14 steel-belted radial ply white-stripe tires)
- ☐ Limited slip differential rear axle
- ☐ Deluxe luggage compartment trim
- ☐ Deluxe body side moldings
- ☐ Door edge guards
- ☐ Side window sill moldings
- ☐ P195/75R-14 steel-belted radial ply white-stripe tires (require puncture-sealant tires)
- ☐ P205/70R-14 steel-belted radial ply white-stripe tires (require F41 Sport Suspension)
- ☐ Puncture-sealant tires
- ☐ Wire wheel cover locking package (locks cover to hub)
- ☐ Color-keyed floor mats, front and rear
- ☐ Cold Climate Package for diesel engine.



The GM Continuous Protection Plan offers service protection in addition to that provided by GM's new vehicle limited warranty. Ask your dealer about it. Coverage available only in the U.S.A. and Canada.

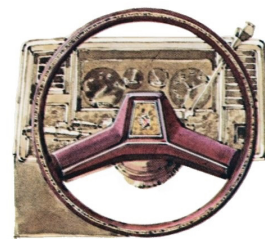
Also, see your Chevrolet dealer for details and information about GM's new 24-month/24,000-mile Power-Protection-Plus Limited Warranty.

MONTE CARLO STANDARD FEATURES



This sophisticated, thoroughly tested on-board computer continuously monitors gasoline engine functions. It also fine-tunes engine performance, under all normal operating conditions, as you drive. Air-fuel mixtures are constantly adjusted to driving conditions, and the system helps compensate for altitude, barometric pressure and temperature changes.

Another benefit of Computer Command Control is that it is covered by the 5-year/50,000-mile emissions system warranty. Ask your dealer for details.



POWER STEERING.

Makes light work of cornering on sharp turns or pulling into tight parking spots.

FULL-PERIMETER FRAME.

Helps provide strength and torsional rigidity. Then, to aid in smoothing and quieting the ride, 14 rubber-cushioned body mounts are used to help isolate road noise and vibration.

DELCO FREEDOM II BATTERY.

Advanced technology designed into this second generation of the famed Freedom battery gives it more staying power than in the past. Never needs recharging; has more reliable starting than before. Also better able to withstand road shock and vibration.



EASY-ROLL TIRES.

GM Specification steel-belted radial ply tires have a high recommended tire pressure of 35 psi that's designed to reduce rolling resistance. In addition, the tires' radial design aids traction in snow as well as in rain. And there's even a tread wear indicator that signals when it's time for replacement.

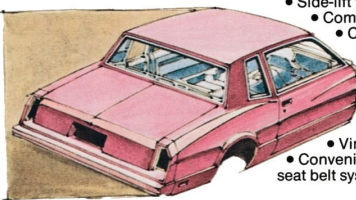
FULL COIL SUSPENSION.

A thick coil spring at each wheel, computer-selected to handle your Monte Carlo's weight and equipment, adds to the car's pleasantly smooth ride. Also includes front stabilizer bar to help reduce body lean during turns.

EXTENSIVE

ANTI-CORROSION TREATMENTS.

Damage caused by corrosive elements from the air or road is restrained by using rust-resisting materials or coatings in critical areas, including zinc-rich precoat metal, special primers and sealers plus oil-base coatings. Rustproof, quality-molded polymers also are used for exterior parts and trim. Front and rear inner fenders help shield outer surfaces from road salt and stones for added resistance to corrosion.



AND MORE STANDARD FEATURES

- Full wheel covers • New fluidic windshield washer system sprays large drops in a wide pattern to aid vision during operation • New bright-finish right-hand outside rearview mirror to match left-hand mirror • Lever on steering column now includes wiper/washer controls along with turn signals and headlamp dimmer • Flow-through power ventilation • High Energy Ignition system • Delcotron generator • Coolant recovery system • Side-lift frame jack • Compact spare tire • Concealed dual-speed electric windshield wipers • Color-keyed seat and shoulder belts • Molded full foam seat construction • Vinyl door pull straps • Convenient single-retractor front seat belt system • Foam-backed cloth headliner • One-piece color-keyed cut-pile carpeting • Center dome light

- Illuminated ashtray light • Cigarette lighter • Glove compartment lock and light • Day/night rearview mirror • Color-keyed steering column and steering wheel • Luggage compartment mat • Dual horns • Double-panel door, hood and deck lid construction • Special acoustical quiet package • Front stabilizer bar • Steel bumpers with high-strength aluminum reinforcing • Visible ball-joint wear indicators on front suspension lower control arms • Bright roof drip moldings • Wheel opening moldings.

POWER FRONT DISC/REAR DRUM BRAKES.

Redesigned front disc brakes have less drag compared to last year and thus contribute to fuel economy. Also include translucent plastic master cylinder reservoir that allows visual checking of fluid level without removing cover.

AUTOMATIC TRANSMISSION.

Features torque converter clutch which provides a direct mechanical connection through the transmission for more efficient use of power when in "drive" range.

ENGINE SELECTIONS

3.8 LITER V6

Monte Carlo's standard 2-barrel engine comes in two versions: a 229-cu.-in. size and a 231-cu.-in. type for California. Both are quick-responding, light and compact, providing you with good performance. Features a Dualjet carburetor, plus a cast-iron engine block and crankshaft.

4.4 LITER V8

Count on this optional 2-barrel engine to give smooth V8 performance and added highway power. It features a short-stroke, valve-in-head design and Dualjet carburetor which, together, help provide good engine performance. Also includes a cast-iron engine block with full jacket cylinder cooling, cast-iron crankshaft, hydraulic valve lifters and exhaust valve rotators. (Not available in California.)

5.0 LITER V8

This optional engine has even more V8 power for highways and hills. Also has what it takes to carry big loads or tow a trailer. Short-stroke valve-in-head design with 4-barrel carburetor helps provide good engine performance. (Available only in California.)

4.3 LITER V6 AND 5.7 LITER V8 DIESELS

Get smooth performance at highway speeds with these optional diesel engines. "Quick Start" feature with glow plugs and unique precombustion chamber design aids cold-morning starts. No spark plugs, distributor or carburetor to service or replace. Engines meet existing emissions standards without a catalytic converter. Maintenance is similar to gasoline engines except for changing oil and filter every 5,000 miles. (See Power Teams chart for availability.)

SAFETY FEATURES

OCCUPANT PROTECTION.

Manual lap/shoulder belts with push-button buckles for driver and right front passenger (driver's side includes visual and audible warning system) • Manual lap belts with push-button buckles for rear passenger positions; also center front • Energy-absorbing steering column • Passenger guard door locks • Safety door latches and stamped steel hinges • Folding seat back latches • Energy-absorbing instrument panel and front seat back tops • Laminated windshield/tempered side and rear glass • Safety armrests • Identification symbols for controls and displays.

ANTI-THEFT.

Audible anti-theft ignition key reminder • Anti-theft steering column lock • Inside hood release.

LONG RECOMMENDED SERVICE INTERVALS*

Engine Oil	12 months or 7,500 miles**
Oil Filter	12 months or 7,500 miles; every 15,000 miles thereafter**
Spark Plugs†	30,000 miles
Chassis Lubrication	12 months or 7,500 miles
Automatic Transmission Fluid Change	Every 100,000 miles

*See Owner's Manual for conditions requiring more frequent intervals.
**5,000 miles by diesel. †Except diesel.

MONTE CARLO POWER TEAMS

Engine	Ordering Code	Displacement (cubic inches)	Engine Availability	Automatic Transmission
All States Except California				
3.8 Liter 2-Bbl. V6 (A)	LC3	229	Std.	Std.
4.4 Liter 2-Bbl. V8 (B)	L39	267	EC	Std.
4.3 Liter Diesel V6* (C)	LT6	260	EC	Std.
5.7 Liter Diesel V8 (C)	LF9	350	EC	Std.
California Only (With California Emissions Requirements)				
3.8 Liter 2-Bbl. V6 (D)	LD5	231	Std.	Std.
5.0 Liter 4-Bbl. V8 (B)	LG4	305	EC	Std.
5.7 Liter Diesel V8 (C)	LF9	350	EC	Std.

Std. — Standard. EC — Optional at Extra Cost.

* Available approximately Jan. 1, 1982.

PRODUCED BY GM:
(A) CHEVROLET MOTOR DIVISION. (B) CHEVROLET MOTOR DIVISION AND GM OF CANADA.
(C) OLDSMOBILE MOTOR DIVISION. (D) BUICK MOTOR DIVISION.

ACCIDENT AVOIDANCE.

Side marker lights and reflectors • Parking lamps that illuminate with headlamps • Four-way hazard warning flasher • Backup lights • Lane-change feature in direction signal control • Windshield defrosters, washer and dual-speed wipers • Vinyl-edged inside mirror • Outside rearview mirror • Dual master cylinder brake system with warning light • Starter safety switch • Dual-action safety hood latches.

DIMENSIONS (in inches)

	Monte Carlo Sport Coupe
EXTERIOR	
Wheelbase	108.1
Length (overall)	200.4
Width (overall)	71.8
Height (loaded)	54.3
Tread — Front	58.5
Tread — Rear	57.8
Fuel Tank Capacity (gallons)	18.1
INTERIOR	
Head Room — Front	37.6
Head Room — Rear	37.8
Leg Room — Front	42.8
Leg Room — Rear	36.3
Hip Room — Front	51.7
Hip Room — Rear	54.9
Shoulder Room — Front	56.3
Shoulder Room — Rear	55.9
Usable Luggage Capacity (cu. ft.)	16.8

A WORD ABOUT ENGINES.

Some Chevrolets are equipped with engines produced by other GM divisions, subsidiaries, or affiliated companies worldwide. See your dealer for details.

A WORD ABOUT ASSEMBLY, COMPONENTS AND OPTIONAL EQUIPMENT IN THESE CHEVROLETS.

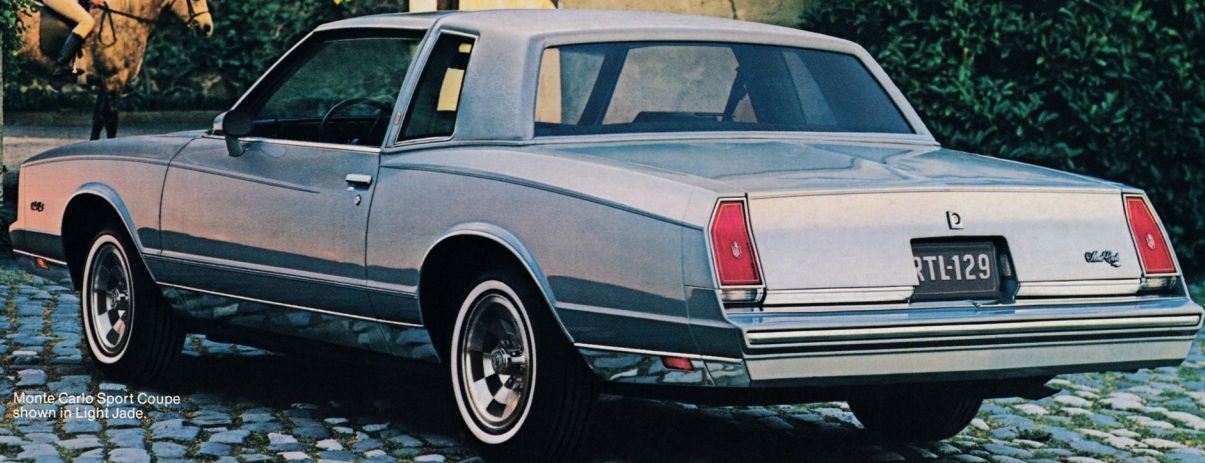
The Chevrolets described in this catalog are assembled at facilities of General Motors Corporation operated by the GM Assembly Division or GM of Canada. These vehicles incorporate thousands of different components produced by various divisions of General Motors and by various suppliers to General Motors. From time to time during the manufacturing process, it may be necessary, in order to meet public demand for particular vehicles or equipment, or to meet federally mandated emissions, safety and fuel economy requirements, or for other reasons, to produce Chevrolet products with different components or differently sourced components than initially scheduled.

All such components have been approved for use in Chevrolet products and will provide the quality performance associated with the Chevrolet name.

With respect to extra cost optional equipment, make certain you specify the type of equipment you desire on your vehicle when ordering it from your dealer. Some options may be unavailable when your car is built. Your dealer receives advice regarding current availability of options. You may ask the dealer for this information. GM also requests the dealer to advise you if an option you ordered is unavailable. We suggest that you verify that your car includes optional equipment you ordered or, if there are changes, that they are acceptable to you.



Chevy makes good things happen... for you!



Monte Carlo Sport Coupe
shown in Light Jade.

Monte Carlo